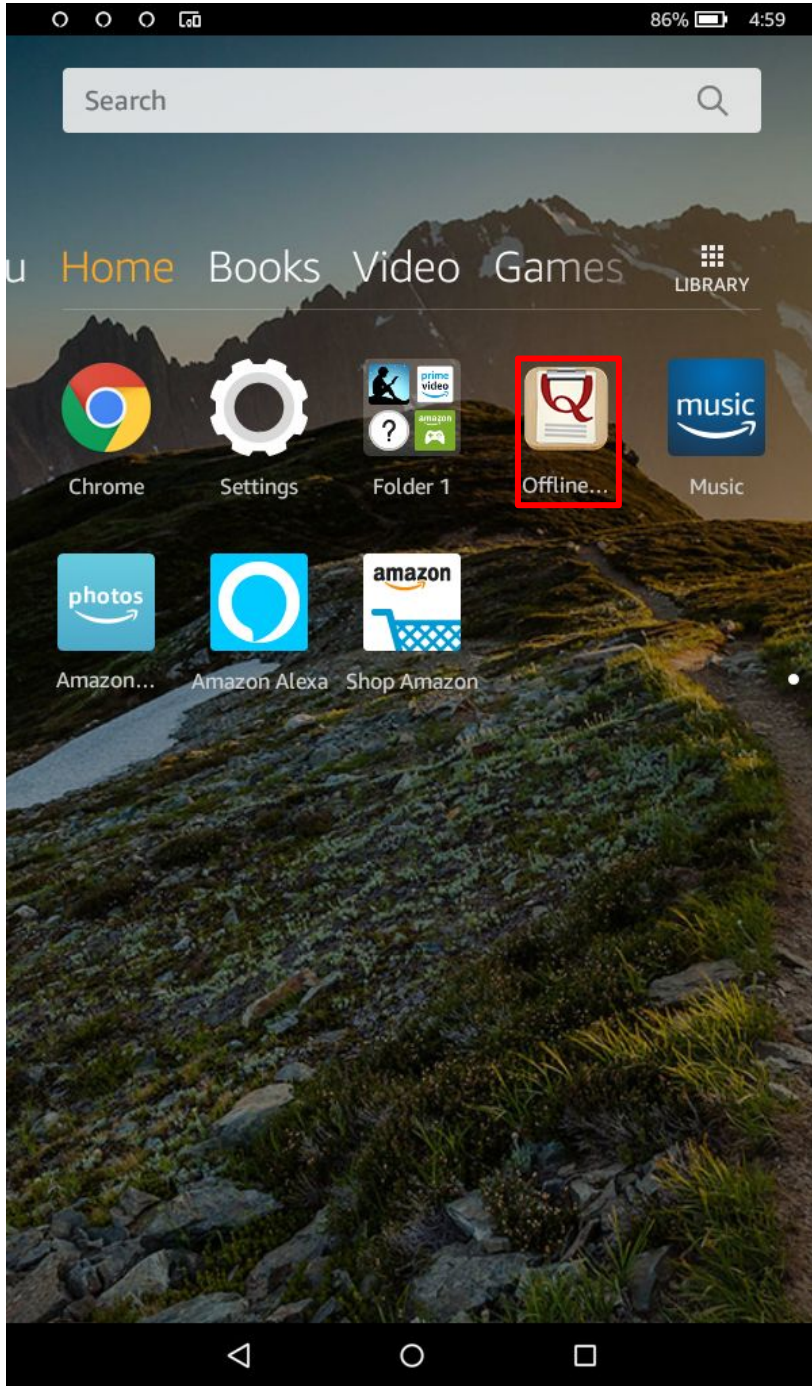
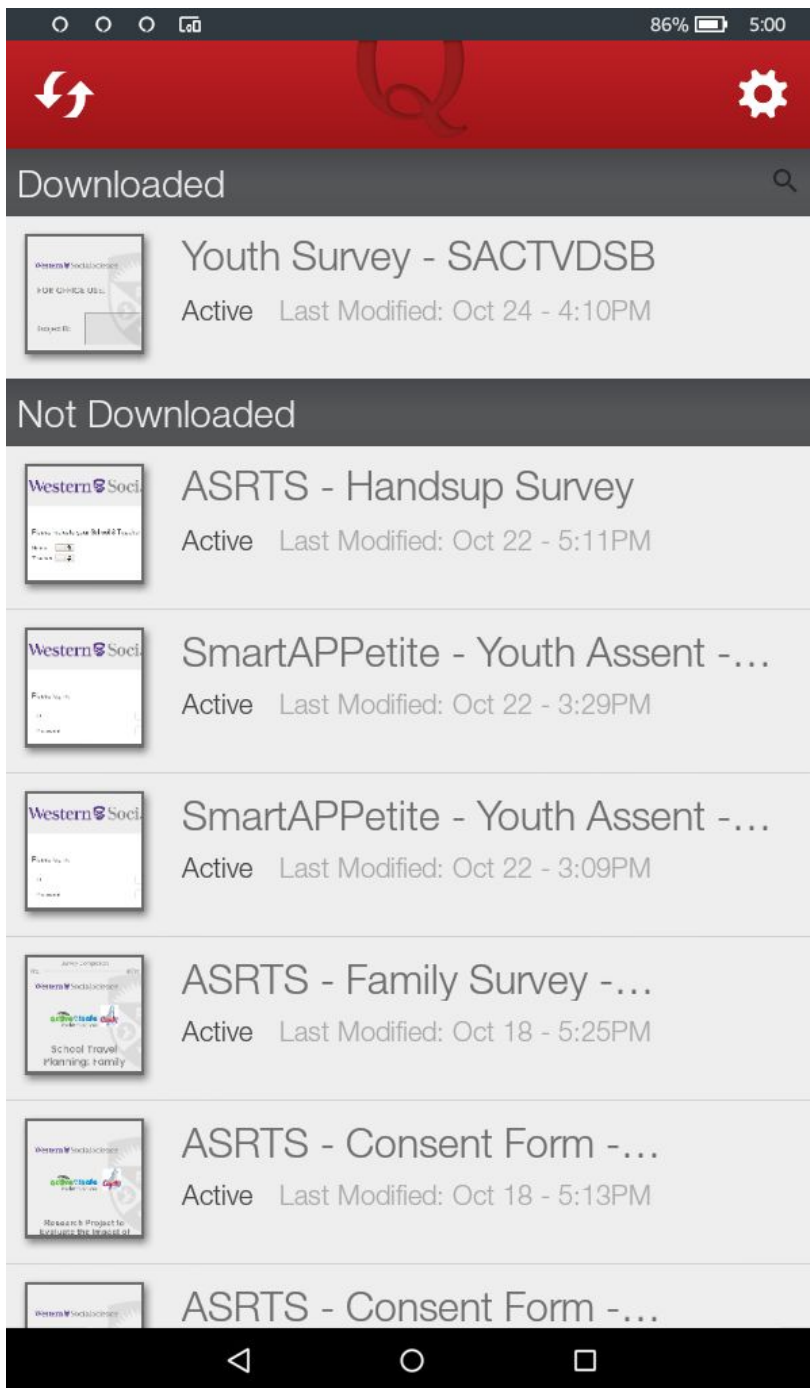


ASRTS Tablet Guide for Youth Surveys



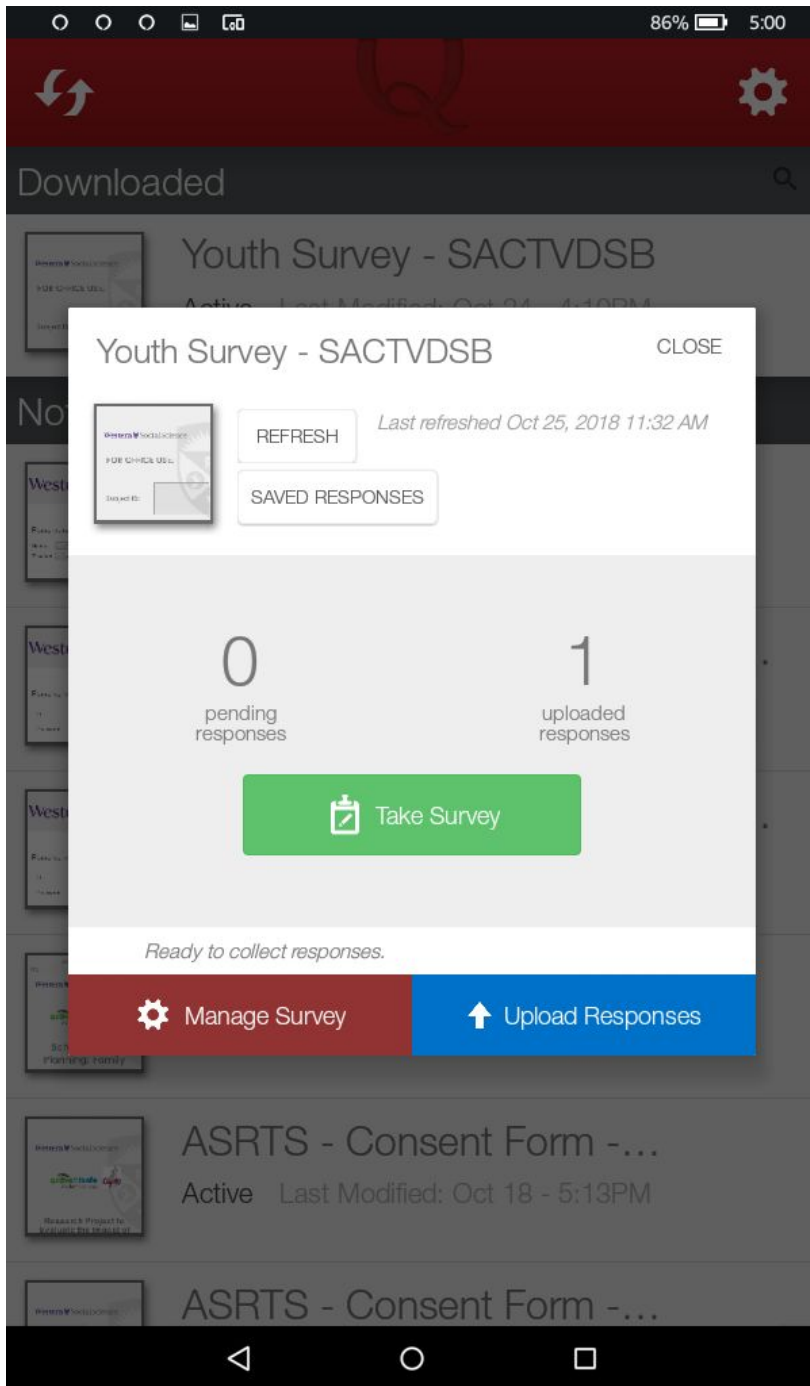
1. Open the Qualtrics Offline Survey app on the tablet.





2. Click on the downloaded YOUTH SURVEY corresponding to your school. For example, “Youth Survey - SACTVDSB”.

Note: when opening the app, a dialogue box may appear regarding location services. Please disregard it as location is not collected via this survey.



3. Click on the green button labelled “Take Survey”.

Obtaining Location...

FOR OFFICE USE:

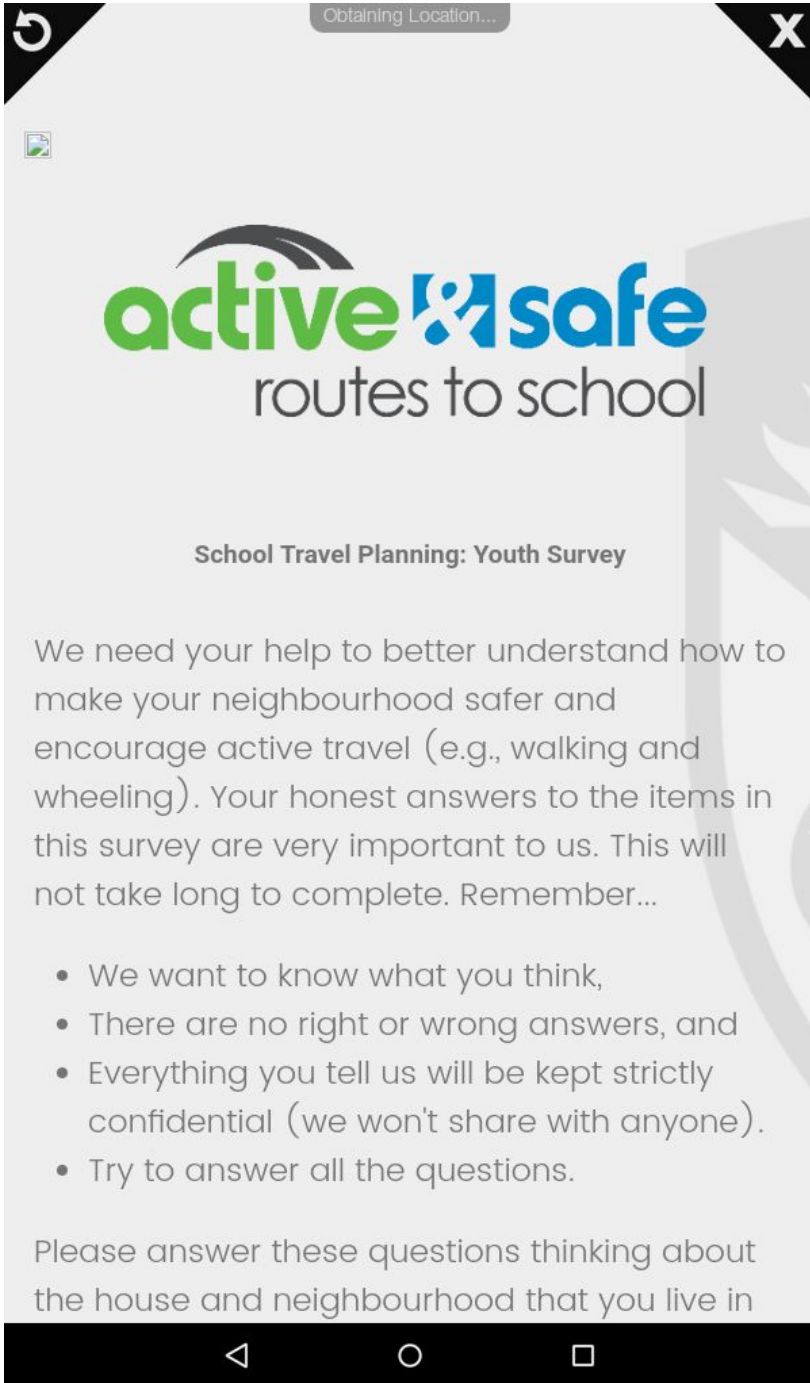
Subject ID:

Child Initials

→

Powered by Qualtrics

4. Enter the student's ID in the box labelled "Subject ID" (found on the Assent Form and Class List)
 - a. Note: all 0s in the student ID are zeros. No letter O's are used.
5. Enter the student's initials in the box labelled "Child Initials".
6. Click on the purple arrow.



7. Give the tablet to the student to complete the survey.

Western  Social Science

You're finished. Thank you for all your help!

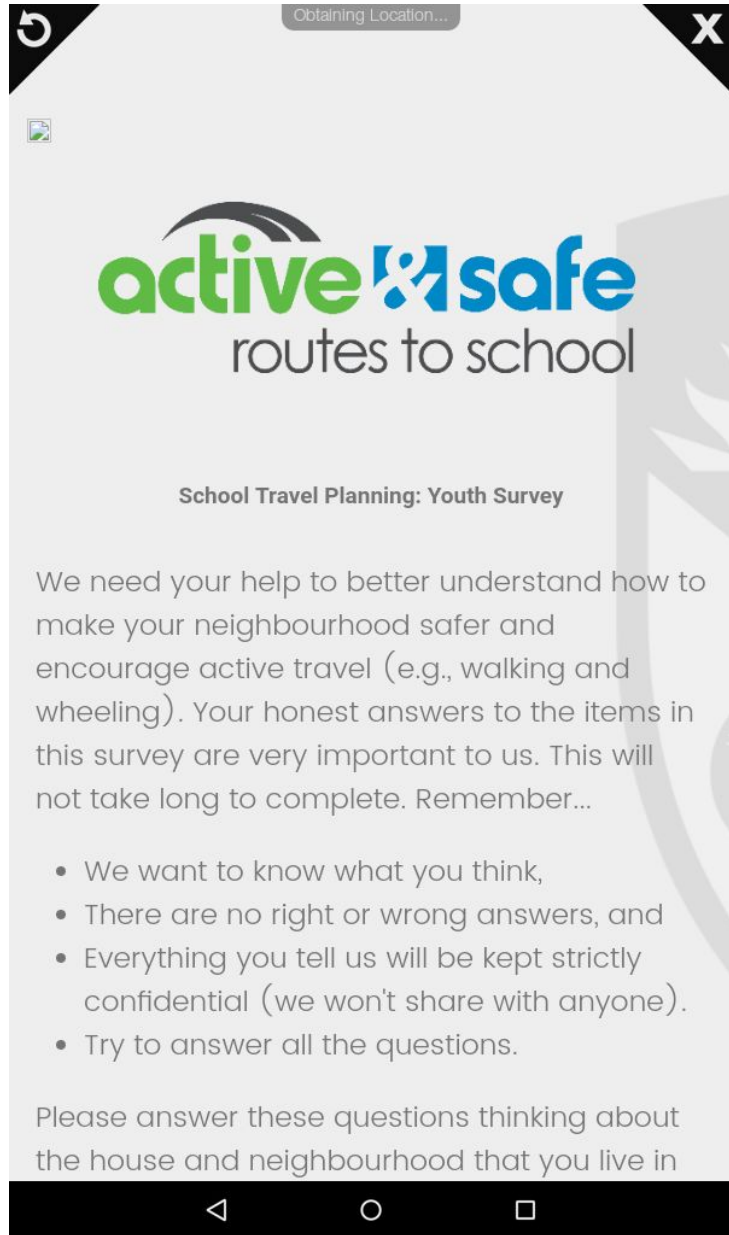

routes to school

Restart

Powered by Qualtrics

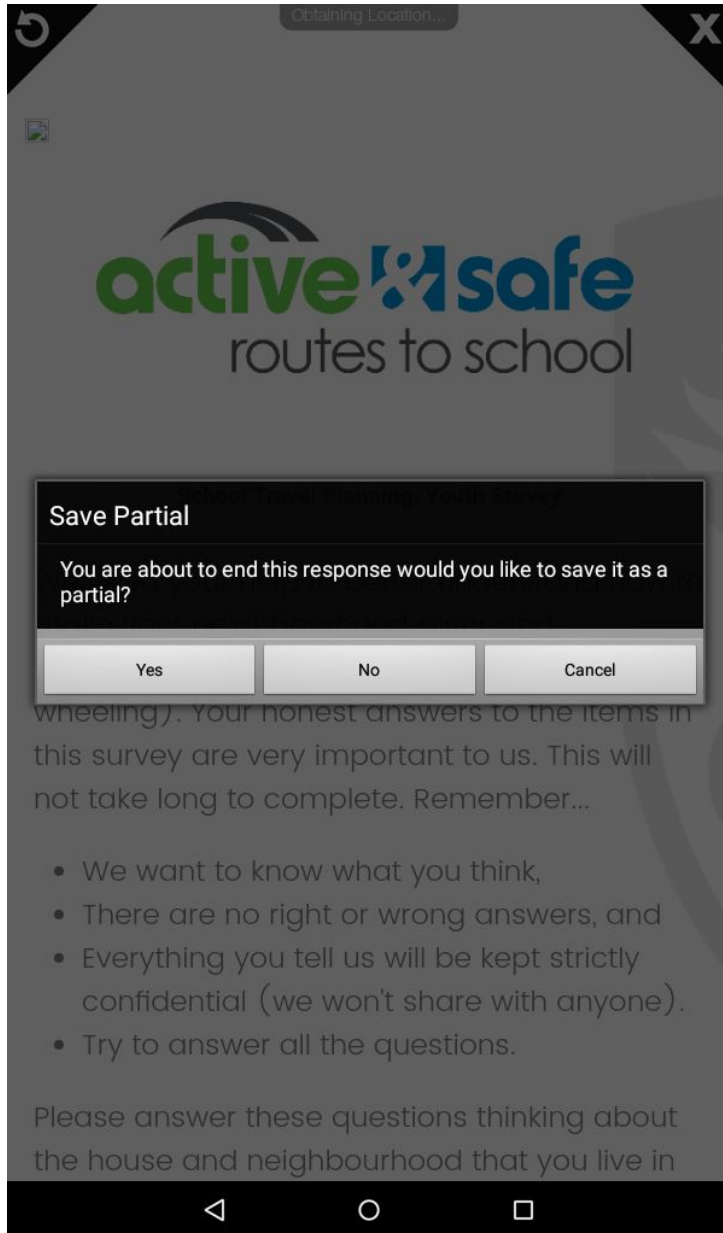
8. Once a student has completed the survey:
 - a. If a different student will be using the device to complete a survey, please hit “restart” and repeat steps 4 to 7.
 - b. If you are done with the device, you may hit the “X” in the top right corner and exit the app.

Should a student wish to withdraw from the survey:



1. Click on the “X” in the top right corner.

Should a student wish to withdraw from the survey:



2. A dialogue box will appear (if using an Android tablet) asking if you would like to save the response as a partial. Please hit “yes”.
 - a. If prompted to name the partial response, please title it “Withdrawn”.